

Atlas Copco



E-Air VSD range

Electric mobile air compressors
with VSD technology



If you have the power to choose, choose electric

Every now and then, an innovation comes along that changes the industry. Atlas Copco's range of E-Air VSD compressor range is a game-changer when it comes to performance, energy-efficiency and versatility. The E-Air's VSD motor is clean, compact, energy-efficient and quiet, while the compressors are easy to install and operate. No emissions, unrivaled efficiency, low noise levels and a plug-and-play design; you can take the E-Air anywhere.



Take the E-Air anywhere, plug it in, set the pressure and start to work.



Best in class cost of ownership

The E-Air VSD range is not only a sustainable solution for the environment. Total cost of ownership is impacted by performance, ease of use, service, efficiency, resale value... The E-Air VSD range ticks all the boxes.

| | | | |
|------------------------|---|---|---|
| | | UP TO 50% SMALLER THAN CONVENTIONAL COMPRESSORS | PACE SYSTEM CONTROL THE PRESSURE AND FLOW |
| | UP TO 50% LIGHTER THAN CONVENTIONAL COMPRESSORS | UP TO 50% OPERATIONAL COST SAVINGS , COMPARED TO DIESEL MODELS | SERVICE ONCE EVERY 2 000 HOURS/ YEARS |
| PLUG & PLAY | LOW NOISE AND EMISSION ZONE COMPLIANT | VARIABLE SPEED DRIVE | LEGENDARY HARDHAT CANOPY |

Control your total cost of ownership with E-Air VSD technology

The E-Air's VSD in-house designed permanent magnet motor and air element offer unmatched performance, at an incredibly small footprint.

E-Air

UP TO
50%
OPERATIONAL COST
SAVINGS, COMPARED TO
DIESEL MODELS



Minimize operating costs with 50% savings

- **50% more efficient** compared to a fixed speed electric compressor in partial or unload conditions, the state compressors run in 90% of their life.
- Cheaper to operate compared to a diesel compressor.
- No diesel engine results in preventative maintenance **only every 2000 hours/2 years.**



The King of versatility


Every E-Air VSD is multiple compressors in one; thanks to integrated PACE technology. On the XC2003 controller, you can easily select the pressure your application requires from a wide pressure range.



LOW NOISE
EMISSION
ZONE
COMPLIANT



PLUG & PLAY



Operate and connect the E-Air everywhere

- The perfect fit for low emission zones.
- Silent operation: noise level as low as 61 Db(A).
- VSD eliminates start-up peak current.
- Lower need for ventilation when working in closed off environments: tunnels, underground or indoor locations.
- Integrated start-up protection: you set the max amps the machine is allowed to take from the grid and the E-Air compressor always complies. (no phase sequence issues, the VSD can handle any combination)
- Small footprint and low weight: easy to manoeuvre

Wondering what your savings would be?

Go to www.atlascopco.com/e-air and learn how the E-Air can impact your total cost of ownership.

Discover 3 plug-and-play E-Air VSD models

The E-Air VSD range consists of 3 compressors; covering a wide range of applications that require a flow from 3.7-13.2 m³/min (131-466 cfm) and pressure between 5 and 13 bar.

Have you ever seen a 7 m³ compressor below 750kg?

The E-Air H250 VSD is best in class with regards to flow to weight ratio. You simply tow in reliable performance to any job site, without special driving license.

Thanks to the vertical drive train, all E-Air VSD compressors are not only best in class with regards to performance. Also footprint and weight are impacted tremendously. Powerful output, in a small and easy to manoeuvre package.

UP TO **50%**
LIGHTER
THAN CONVENTIONAL COMPRESSORS



UP TO **50%**
SMALLER
THAN CONVENTIONAL COMPRESSORS



Plug and play

With its smart socket system, the H185 - H250 VSD fit on any power connection you may have available, 16A, 32A or 63A.

The E-Air H450 VSD is connected to the grid through the Power Lock: an easy to use and save connection.



Made for tough circumstances

Our E-Air VSD compressors are green at heart, but have been built with the same robustness as their diesel counterparts.

- HardHat hood
- Fit for ambient temperatures of up to 50°C
- C3-certified body-work
- Water-cooled inverter
- Oil-cooled VSD drive train
- Permanent magnet motor features potted windings: IP66 rating for protection against dust and water.

**LEGENDARY
HARDHAT[®]
CANOPY**



Control with the touch of a button

The easy to use XC2003 controller gives full control.



Easy to service

Thanks to the U-Flex design of the hood, it's easy to access all service points of the E-Air H450 VSD.



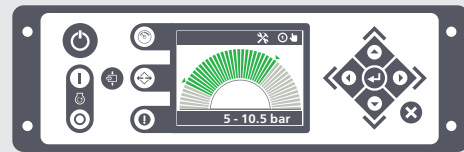
E-Air VSD: Pressure range adjustable with PACE functionality

Every **E-Air VSD** comes with PACE technology (Pressure Adjusted through Cognitive Electronics), an electronic pressure regulation system. You select the pressure in the compressor's controller, your application dictates the flow, the PACE controller locks in and regulates the perfect combination. Setting the pressure is a matter of 3 clicks and you can choose a pressure at increments of 0.1 bar.

One compressor can cover the needs of various applications. From 5 bar to run a handheld tool, to 10 bar for sandblasting to up to 13 bar for cable blowing, all with one machine.

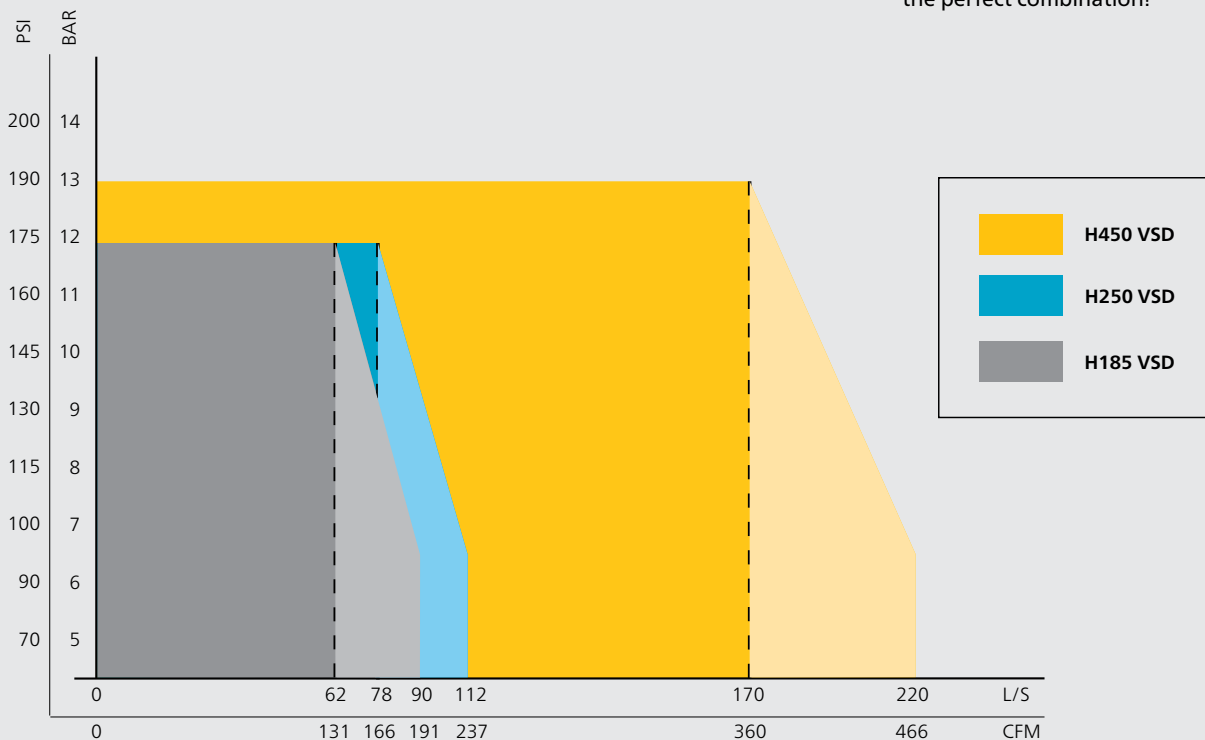
A conventional, fixed speed compressor runs at a fixed pressure level, delivering a corresponding maximal flow rate. A PACE compressor however, can deliver additional flow at lower pressure settings. When the load goes down, PACE fine-tunes the motor speed accordingly, which saves energy... and money.

You pick the pressure in increments of 0.1 bar



The PACE controller locks in, and regulates, the perfect combination!

Operating range E-Air VSD



With FleetLink, you'll have the latest fleet information concerning your fleet performance at hand, wherever, whenever.



Optimize fleet usage



Maximize the effectiveness and productivity of your fleet and uncover potential for optimization and savings.

Minimize downtime



Quicker response time to optimize maintenance planning.

Technical data

| | | H185 VSD | H250 VSD | H450 VSD |
|---|---------------------|---------------------------------------|--------------------|------------------------------------|
| Working pressure range | Bar (g) | 5 - 12 | | 5 - 13 |
| | Psi (g) | 72 - 174 | | 72 - 190 |
| Socket connection | A | CE Smart Socket, 16, 32, 63A | | Powerlock |
| Free Air Delivery | m ³ /min | 5.4 - 3.7 | 6.6 - 5.0 (at 63A) | 13,2 - 9,72 |
| | l/s | 90 - 62 | 110 - 84 (at 63A) | 220 - 170 |
| | cfm | 191 - 131 | 233 - 178 (at 63A) | 466 - 360 |
| Sound pressure level (LpA) at 7m (23ft) | dB(A) | 61 | | |
| Max ambient temperature | °C | 50 | | |
| Motor | | | | |
| Installed motor power | kW | 26 | 37 | 75 |
| Voltage | V | 380V - 460V +/-10% | | |
| Rated frequency | Hz | 50/60 | | |
| Dimensions (LxWxH) | mm | 2765 x 1346 x 1435 fixed no brakes | | 3747 x 1593 x 1572 fixed towbar |
| Weight | kg | 749 | | 1200 |

* Powerlock as option



| Standard features and options | H185 VSD | H250 VSD | H450 VSD |
|---|----------|----------|----------|
| HardHat canopy | v | v | v |
| In-house designed permanent magnet motor design | v | v | v |
| Moter oil-cooled with potted windings for robustness (IP66) | v | v | v |
| Water-cooled inverter (IP66) | v | v | v |
| Smart Socket (fit on 16A, 32A or 63A power connection) | v | v | |
| PowerLock | | | v |
| 110% spillage-free frame | v | v | v |
| Strong undercarriage made from single sheet without welding | v | v | v |
| Heavy-duty air filter with safety cartridge | | | v |
| Aftercooler and bypass | 0 | v | v |

v: standard
o: optional

Power Technique Solutions Portfolio

Atlas Copco's Power Technique Business Area has a forward-thinking philosophy. For us, creating customer value is all about anticipating and exceeding your future needs – while never compromising our environmental principles. Looking ahead and staying ahead is the only way we can ensure we are your long term partner.

Air compressors

Ready to go



- 1-5 m³/min
- 7-12 bar

Versatility



- 5.5-22 m³/min
 - 7-20 bar
- *Diesel and electric options available

Productivity partner



- 19-116 m³/min
- 10-345 bar

Handheld tools

Pneumatic tools



- Breakers (2,5 – 40 kg)
- Rockdrills (5 – 25 kg)
- Underground Rock Drills
- Additional Air Tools

Hydraulic tools



- Breakers (11 – 40 kg)
- Additional Hydraulic Tools
- Powerpacks

Petrol engine driven tools



- Breakers & Tie Tampers (25 kg)
- Rockdrills (23 Kg)

Generators



- Portable
- Mobile
- Industrial

*Multiple configurations available to produce power for any size application

Light towers



- Diesel LED and MH
- Electric LED
- Battery LED

Dewatering pumps



- Submersible
- Surface
- Small portable

*Diesel and electric options available

Photos and illustrations contained herein might depict products with optional and/or extra components which are not included with the standard version of the product and, therefore, are not included in a purchase of such product unless the customer specifically purchases such optional/extra components. We reserve the right to change the specifications and design of products described in this literature without notice. Not all products are available in all markets.